



# COMMERCIAL/INDUSTRIAL BUILDING

5629 Raytown Road, Raytown, Missouri



**SALE PRICE: \$499,000 | LEASE RATE: \$3,500/MO NNN**

#### DEMOGRAPHICS

	1 mile	3 miles	5 miles
Estimated Population	8,083	54,824	148,536
Avg. Household Income	\$85,867	\$83,267	\$79,514

- 5,500 SF Building
- Highly accessible
- Great visibility
- Multi-use building
- Zoned Neighborhood Commercial
- Flex space
- One 9' x 10' dock high door
- One 10' x 12' drive in door

 [CLICK HERE TO VIEW MORE LISTING INFORMATION](#)

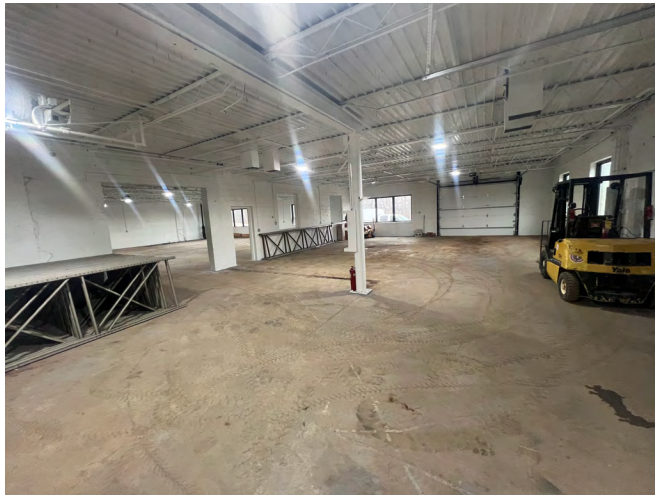
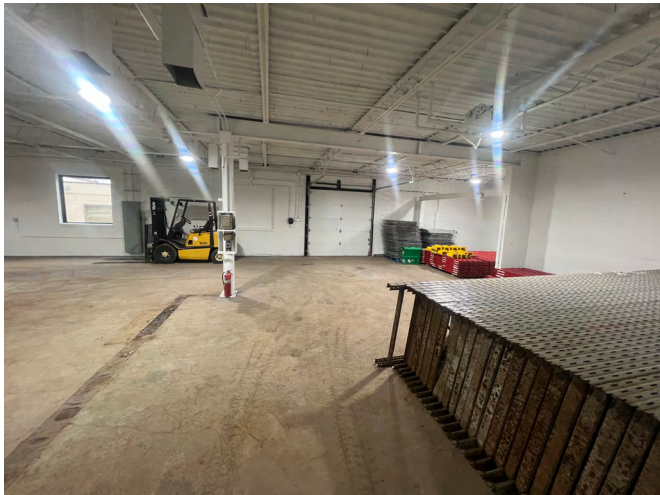
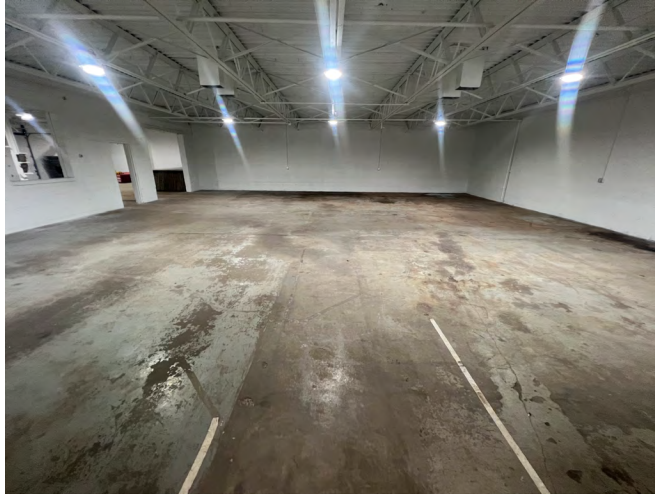
For More Information Contact: *Exclusive Agent*  
BILL MAAS, CCIM | 816.412.7392 | [bmaas@blockandco.com](mailto:bmaas@blockandco.com)



# COMMERCIAL/INDUSTRIAL BUILDING

5629 Raytown Road, Raytown, Missouri

## PHOTOS

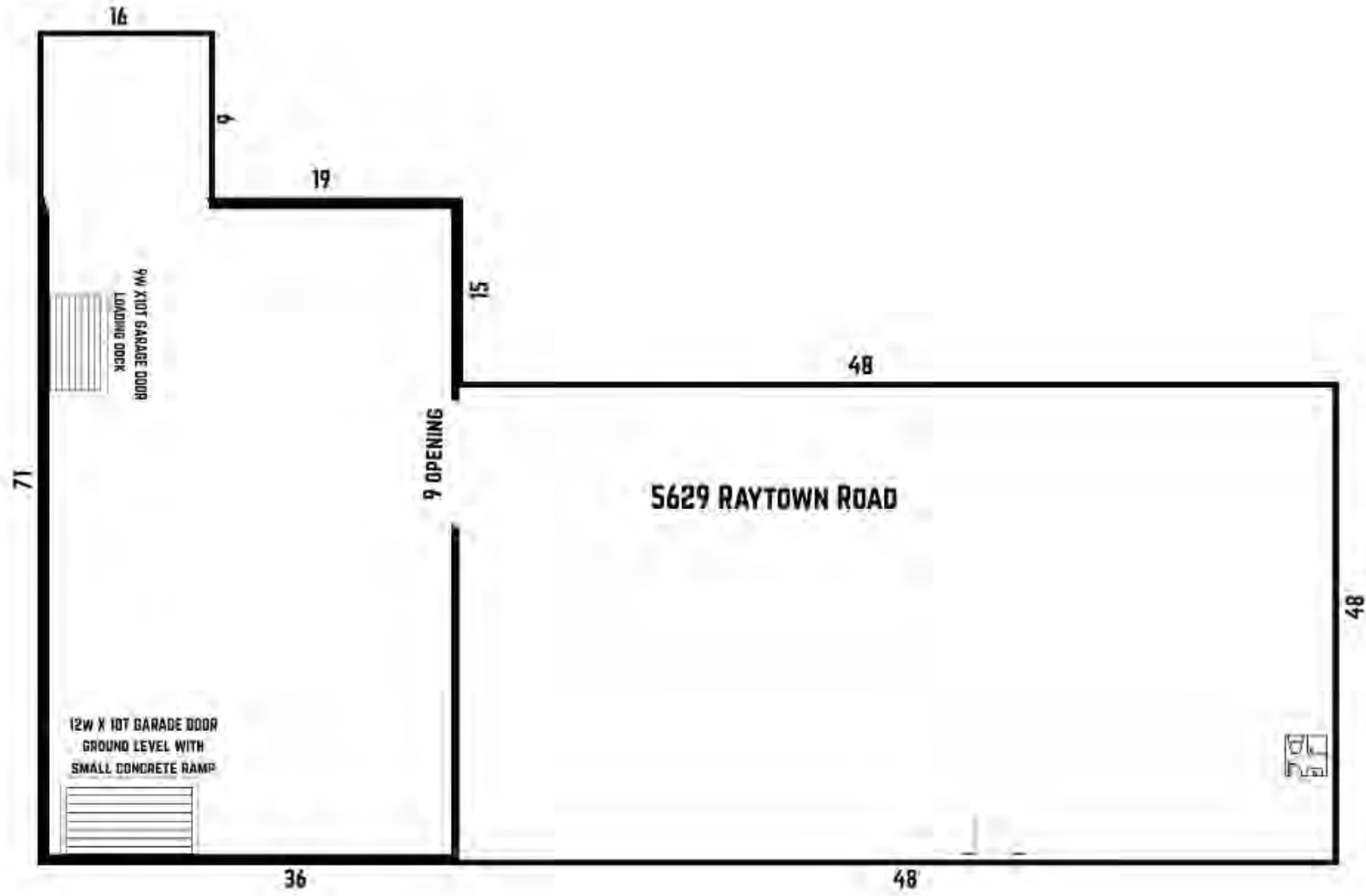




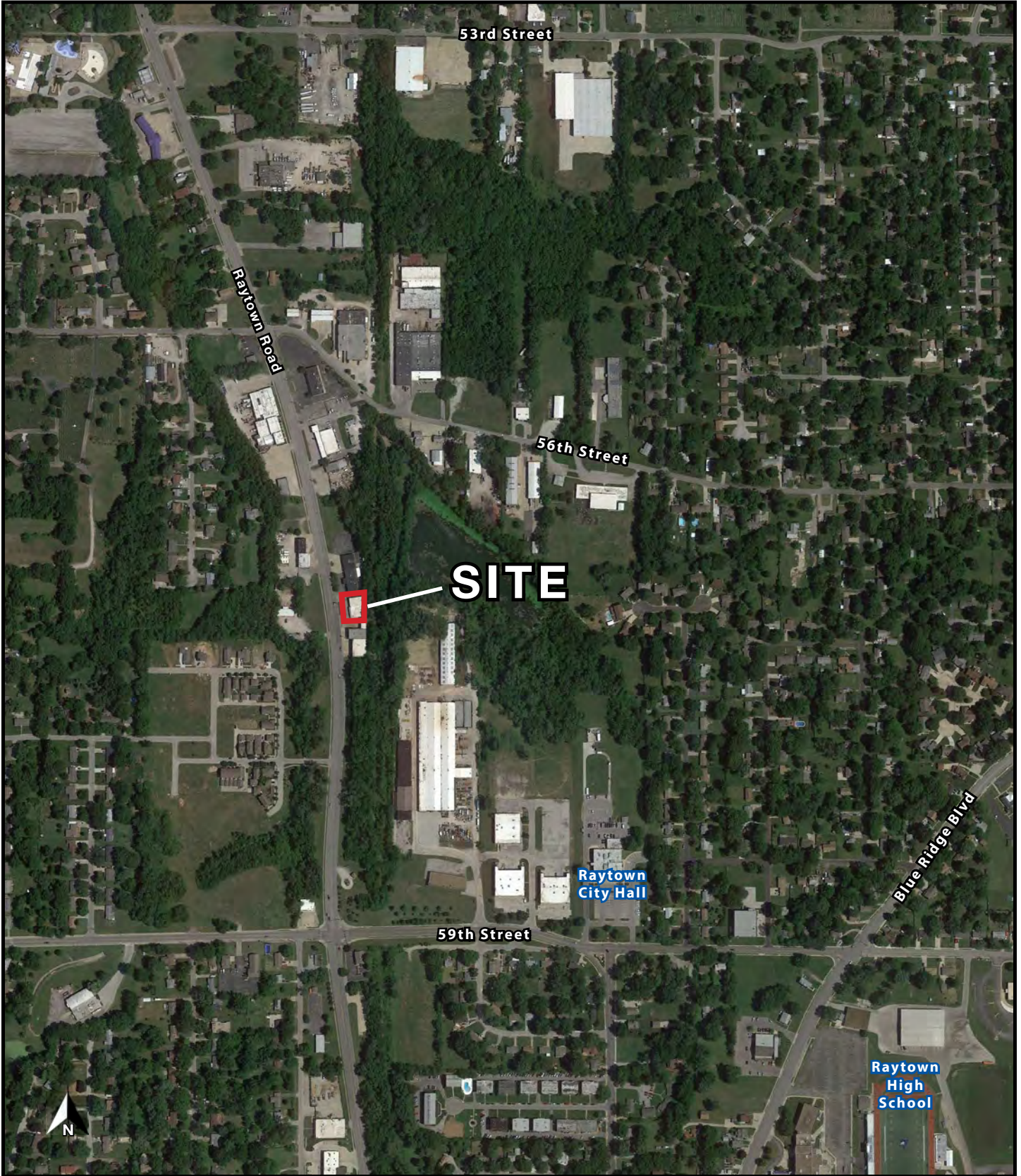
# COMMERCIAL/INDUSTRIAL BUILDING

5629 Raytown Road, Raytown, Missouri

## FLOOR PLAN



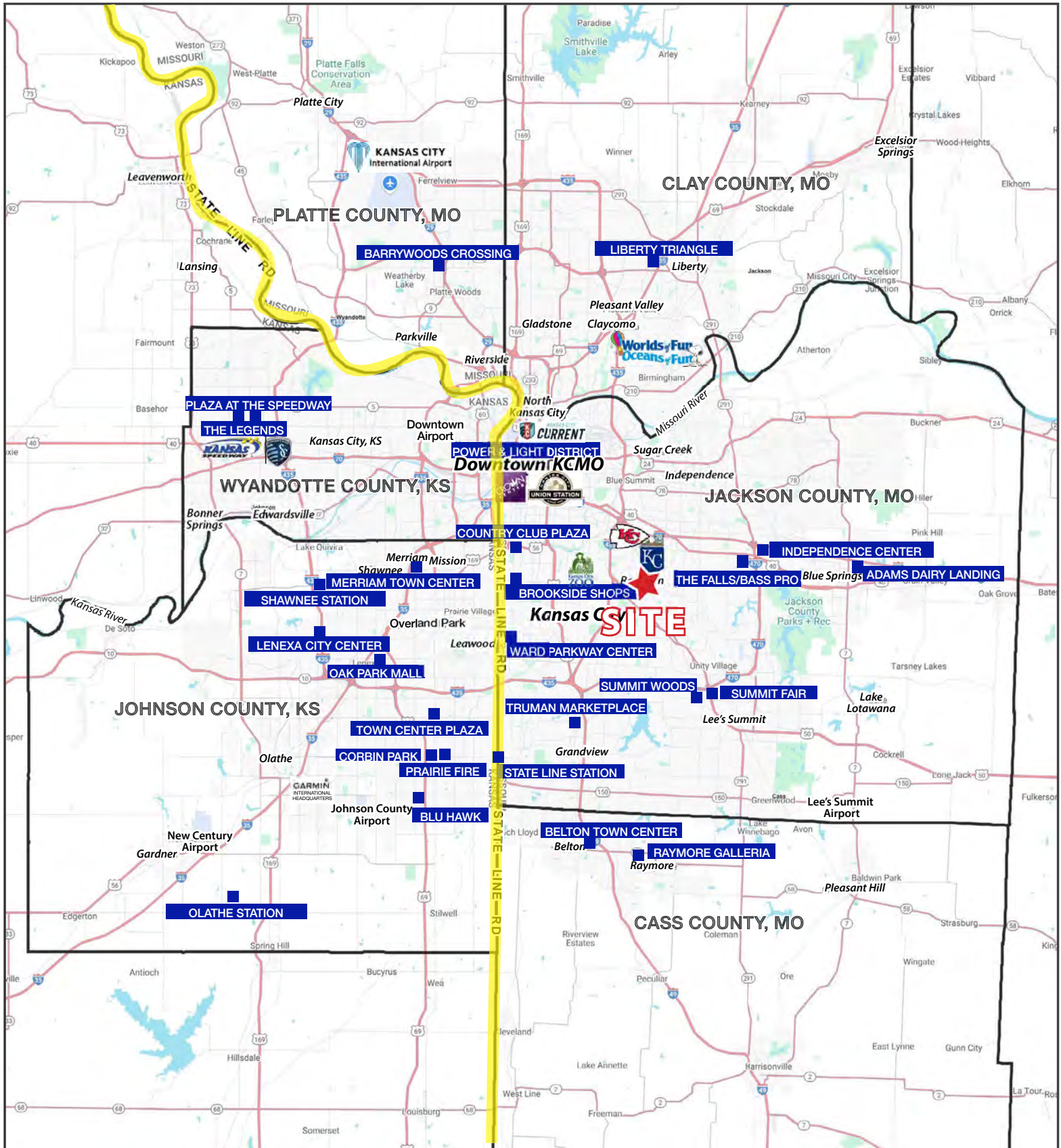
AERIAL





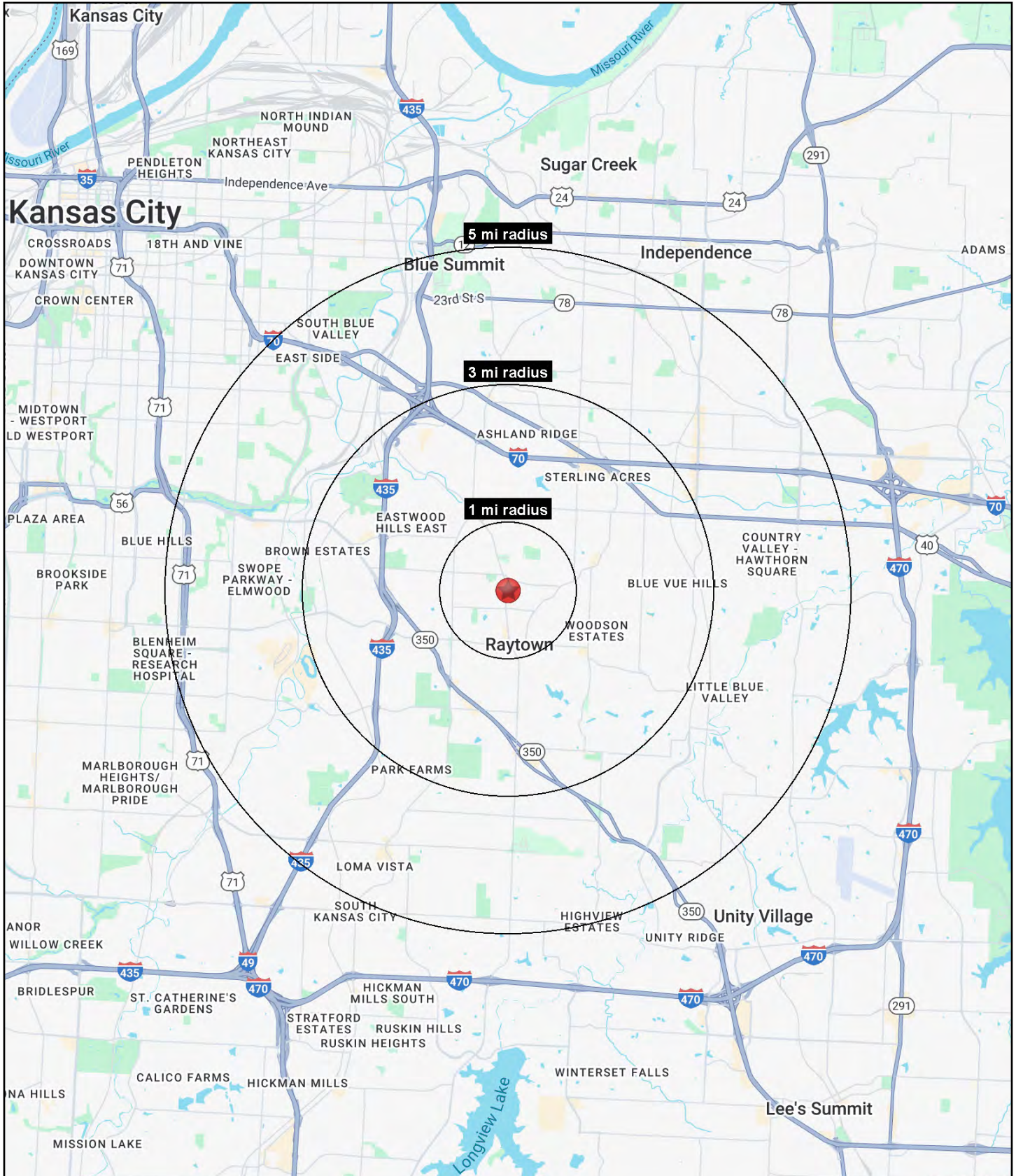
# COMMERCIAL/INDUSTRIAL BUILDING

5629 Raytown Road, Raytown, Missouri



# COMMERCIAL/INDUSTRIAL BUILDING

5629 Raytown Road, Raytown, Missouri





# COMMERCIAL/INDUSTRIAL BUILDING

## 5629 Raytown Road, Raytown, Missouri

5629 Raytown Road Raytown, MO 64133	1 mi radius	3 mi radius	5 mi radius
<b>Population</b>			
2025 Estimated Population	8,083	54,824	148,536
2030 Projected Population	8,005	54,575	147,356
2020 Census Population	8,463	55,352	148,384
2010 Census Population	8,142	54,278	145,309
Projected Annual Growth 2025 to 2030	-0.2%	-	-0.2%
Historical Annual Growth 2010 to 2025	-	-	0.1%
2025 Median Age	40.0	39.3	38.9
<b>Households</b>			
2025 Estimated Households	3,538	23,287	62,676
2030 Projected Households	3,525	23,346	62,634
2020 Census Households	3,532	23,573	62,538
2010 Census Households	3,292	22,685	60,518
Projected Annual Growth 2025 to 2030	-	-	-
Historical Annual Growth 2010 to 2025	0.5%	0.2%	0.2%
<b>Race and Ethnicity</b>			
2025 Estimated White	55.8%	55.2%	50.5%
2025 Estimated Black or African American	32.8%	32.7%	36.7%
2025 Estimated Asian or Pacific Islander	1.0%	1.4%	1.4%
2025 Estimated American Indian or Native Alaskan	0.4%	0.4%	0.5%
2025 Estimated Other Races	10.0%	10.3%	11.0%
2025 Estimated Hispanic	9.8%	10.1%	10.8%
<b>Income</b>			
2025 Estimated Average Household Income	\$85,867	\$83,267	\$79,514
2025 Estimated Median Household Income	\$68,830	\$65,258	\$61,546
2025 Estimated Per Capita Income	\$37,686	\$35,449	\$33,641
<b>Education (Age 25+)</b>			
2025 Estimated Elementary (Grade Level 0 to 8)	1.4%	2.2%	2.6%
2025 Estimated Some High School (Grade Level 9 to 11)	7.4%	5.0%	6.3%
2025 Estimated High School Graduate	34.7%	34.3%	35.2%
2025 Estimated Some College	26.7%	25.0%	25.4%
2025 Estimated Associates Degree Only	7.1%	10.1%	8.9%
2025 Estimated Bachelors Degree Only	15.2%	15.1%	13.9%
2025 Estimated Graduate Degree	7.5%	8.2%	7.7%
<b>Business</b>			
2025 Estimated Total Businesses	346	1,771	4,314
2025 Estimated Total Employees	3,253	16,350	39,681
2025 Estimated Employee Population per Business	9.4	9.2	9.2
2025 Estimated Residential Population per Business	23.3	30.9	34.4

©2025, Sites USA, Chandler, Arizona, 480-491-1112 Demographic Source: Applied Geographic Solutions 5/2025, TIGER Geography - RS1